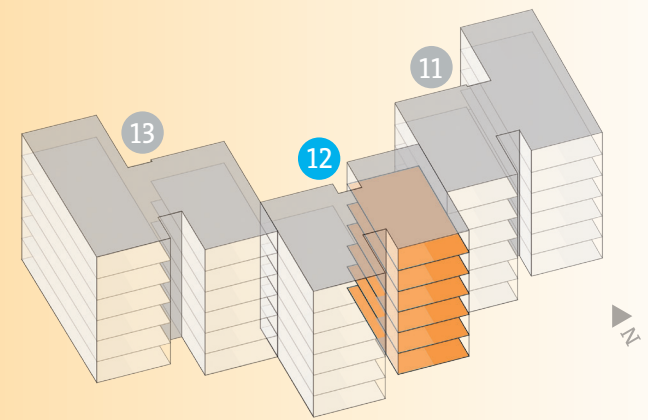


SCHÖNBÜHL ALLEE

3 1/2

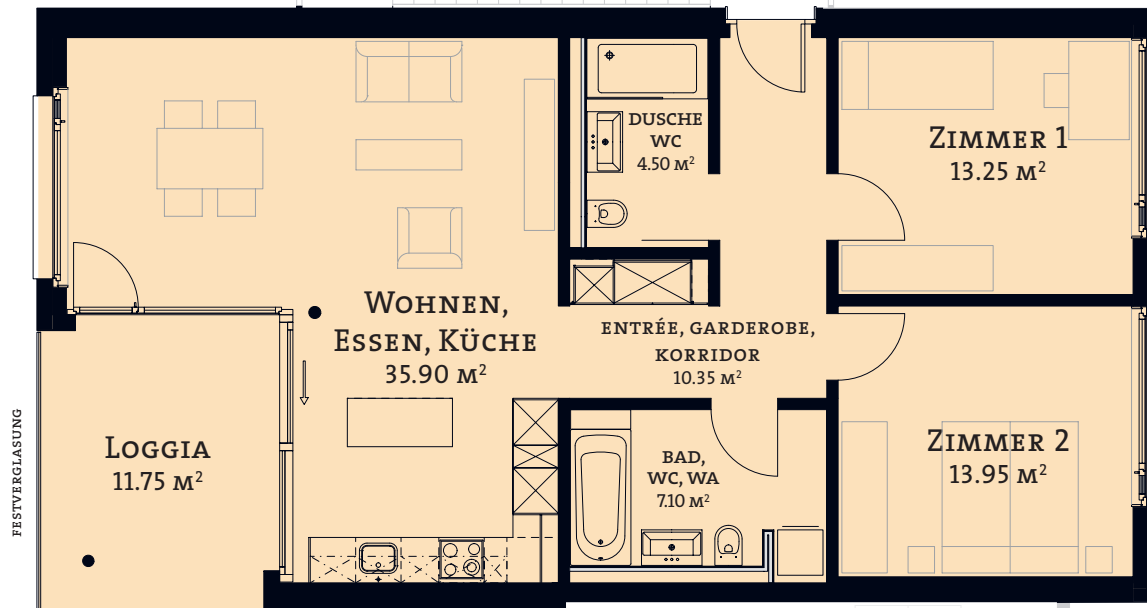
Zimmer-Wohnungen

Typ 2 | HAUS 12



TREPPENHAUS

ATTIKAGESCHOSS	WHG -NR. 12-52
4. OBERGESCHOSS	WHG -NR. 12-42
3. OBERGESCHOSS	WHG -NR. 12-32
2. OBERGESCHOSS	WHG -NR. 12-22
1. OBERGESCHOSS	WHG -NR. 12-12
EG ERDGESCHOSS	WHG -NR. 12-02



FESTVERGLASUNG

3 1/2 ZIMMER-WOHNUMG
NETTOWOHNFÄCHE 84.90 M²



1:100