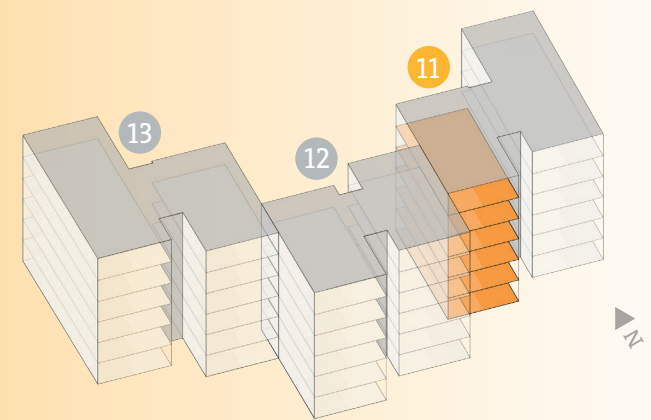


SCHÖNBÜHL ALLEE

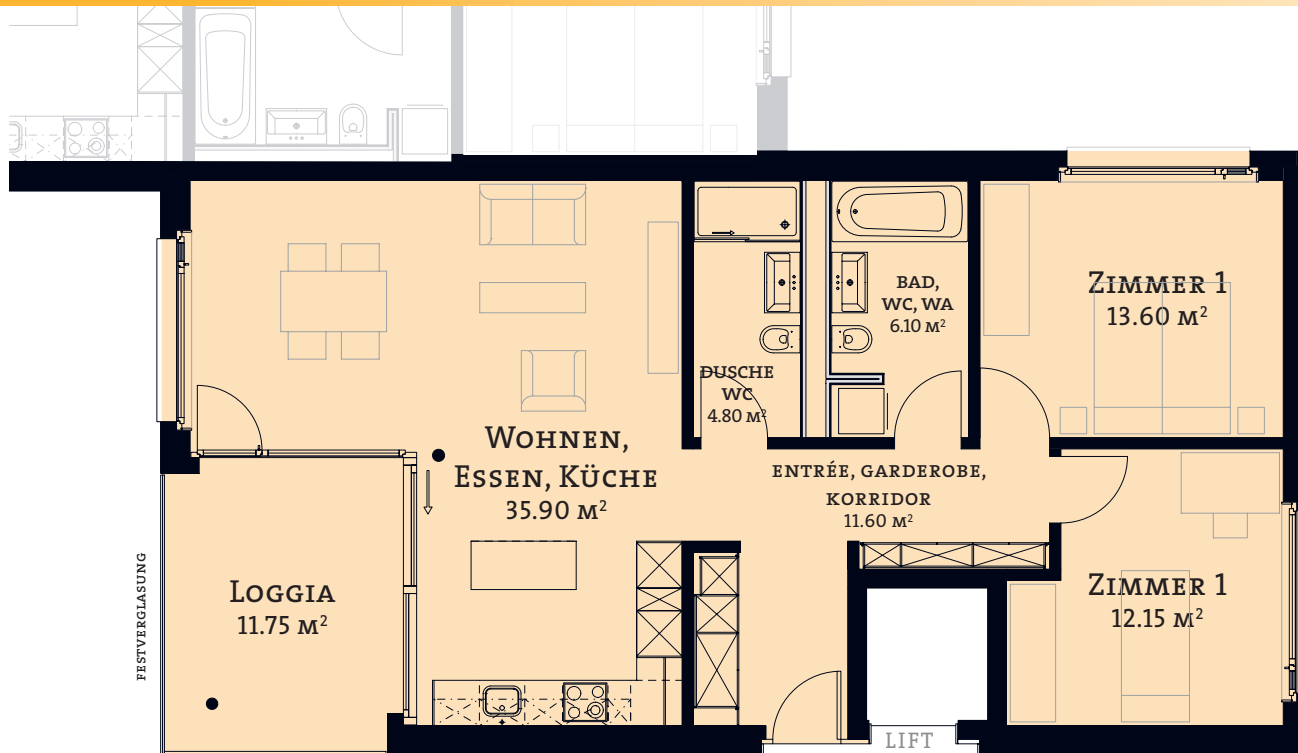
3 1/2

Zimmer-Wohnung

Typ 1 | HAUS 11

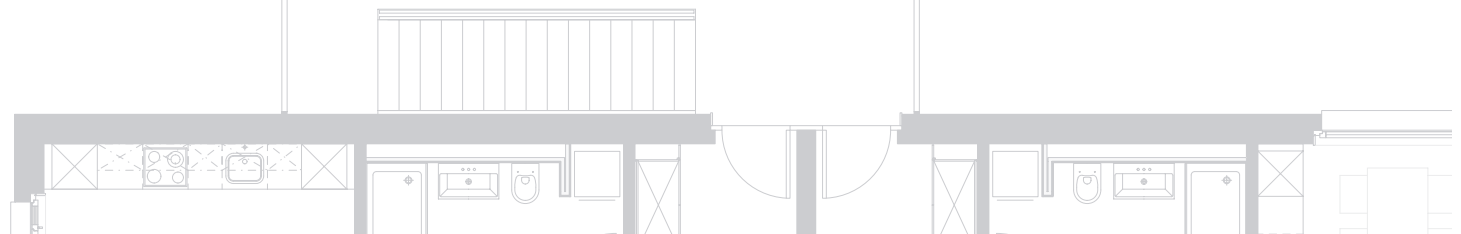


- ATTIKAGESCHOSS | WHG - NR. 11-51
- 4. OBERGESCHOSS | WHG - NR. 11-41
- 3. OBERGESCHOSS | WHG - NR. 11-31
- 2. OBERGESCHOSS | WHG - NR. 11-21
- 1. OBERGESCHOSS | WHG - NR. 11-11
- EG ERDGESCHOSS | WHG - NR. 11-01



3 1/2 ZIMMER-WOHNUNG
NETTOWOHNFLÄCHE 84.20 M²

TREPPENHAUS



1:100