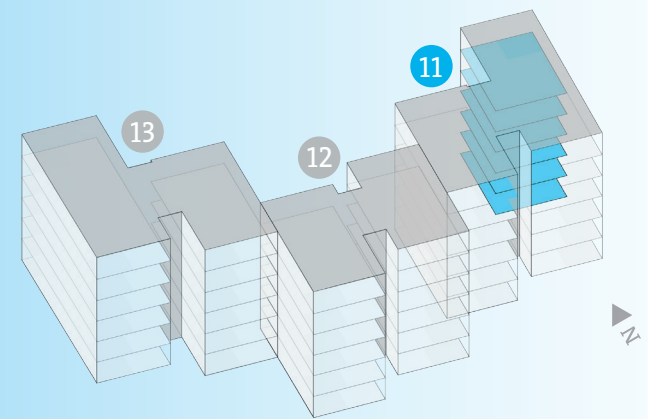


SCHÖNBÜHL ALLEE

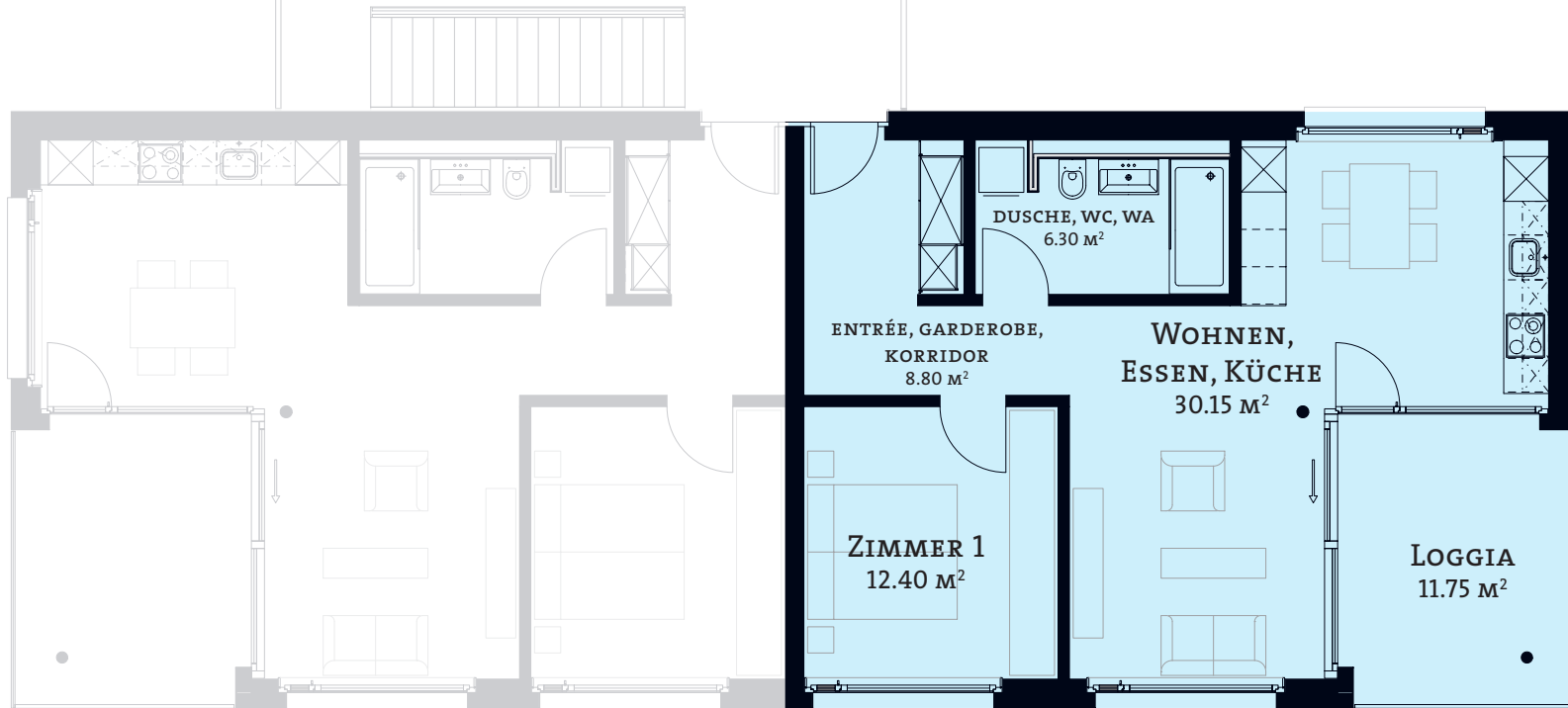
2^{1/2}

Zimmer-Wohnungen

Typ 3 | HAUS 11



TREPPENHAUS



ATTIKAGESCHOSS | WHG -NR. 11-53
4. OBERGESCHOSS | WHG -NR. 11-43
3. OBERGESCHOSS | WHG -NR. 11-33
2. OBERGESCHOSS | WHG -NR. 11-23
1. OBERGESCHOSS | WHG -NR. 11-13
EG ERDGESCHOSS | WHG -NR. 11-03

2^{1/2} ZIMMER-WOHNUMG
NETTOWOHNFLÄCHE 57.70 M²



1:100